

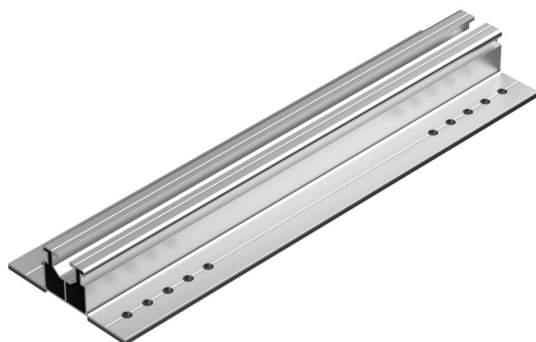
Technical data sheet

Adapter for PV module mounting, trapezoidal roof

Item number: 5901904



Short profile rail for mounting PV modules on trapezoidal roofs. Suitable for the universal terminal type KLU. With pre-mounted slip-resistant sealing mat, including fastening material.



Alu	Aluminium
BK	Bright

Master data

Item number	5901904
Type	ADU TPD ALU
Description 1	Adapter trapezoidal roof
Description 2	for pitched roof system
Manufacturer	OBO
Dimension	110x35x385
Material	Aluminium
Surface	Bright
Surface standard	
Smallest sales unit	20
Unit of quantity	Piece
Weight	42.82 kg
Weight unit	kg/100 pc.

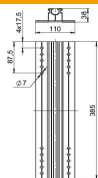
Technical data sheet

Adapter for PV module mounting, trapezoidal roof

Item number: 5901904



Dimensions



Length	385 mm
Width	110 mm
Height	38 mm

Technical data

Accessories	yes
Spare part	no
Cable duct, integrated	no
Cable duct optional	no
Suitable for a type of renewable energy generation	Photovoltaics
Section modulus Sx	3680 mm ³
Section modulus Sy	3760 mm ³